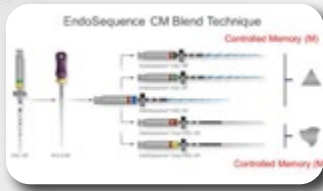




BRASSELER
USA®

Endodontic Solutions Video Library



EndoSequence Blend

The EndoSequence Blend core philosophy is hybridizing NiTi files with different design and metallurgy in different parts of a root canal for maximum safety and efficiency.



Bonded Obturation

Unlike conventional base/catalyst sealers, BC Sealer utilizes the moisture naturally present in the dentinal tubules to initiate its setting reaction.



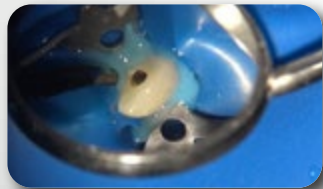
XP-3D Retreatment

XP-3D addresses the shortcomings of traditional NiTi instrumentation and ushers in a new biologic standard of care with minimally invasive anatomical cleaning (www.xp-ed.com).



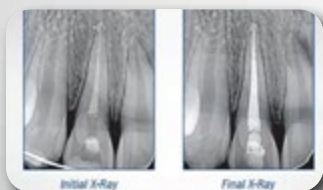
BC Liner

EndoSequence BC Liner is a next-generation bioactive hybrid resin optimized for use with BC Sealer and BC RRM. This versatile and durable material chemically bonds to dentin without the need for a bonding agent.



Flowable Dam

EndoSequence Flowable Dam material is a light-cure, liquid dam and block-out resin which can be applied to gingiva or tooth surfaces prior to root canal therapy, bleaching, sandblasting, or other procedures requiring intra-oral protection.



BC Temp

The new EndoSequence BC Temp is a premixed bioceramic paste for intracanal dressing using Calcium Silicates and Calcium Oxide to combine with water naturally present in dentin.