

NEW

EXPAND

your vision
powerfully, seamlessly, immediately



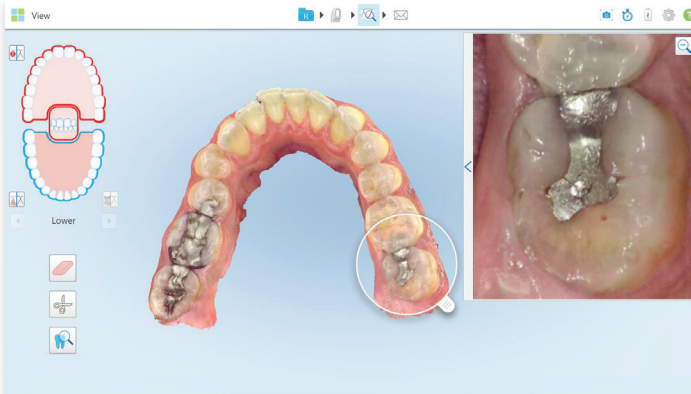
with the iTero Element® 5D Plus Mobile
imaging system

it starts with iTero®

20+ years of expertise

to amplify your experience and capabilities.

The iTero Element® 5D Plus Mobile imaging system offers all of the iTero® Scanner digital capabilities in the power of one scan—with a plus.



A powerhouse of capabilities:*

- Integrated 3D intraoral¹ camera – get more out of one scan
- 20% less waiting time for scan to process²
- Detailed visualization
- Improved viewing angles – engineered for more treatment plan acceptance
- Future ready unit for simplified upgrade path – to support you and your ever-expanding quality of care



State-of-the-art experience:

- Our smoothest scanning experience so you can scan every patient at every appointment
- Ergonomically designed to conform to you and how you work
- 20+ years of engineering expertise poured into a triumph of design – built to offer patients an exceptional experience

The power of the Plus made portable:

- Medical grade, compact, portable scanner
- Wand and computing unit sold and supported by Align Technology
- Zero footprint with VESA mounting
- Dedicated cabin size trolley case

See the Plus Series in action.

Request a demo at [iTero.com](https://www.itero.com)



* Unless otherwise specified, all comparisons are relative to previous generation iTero Element scanners.

¹ Available on iTero Element 5D Plus and Lite software configuration.

² On average, with the iTero Plus series as compared to the iTero Element 2 and iTero Element 5D, and based on scan processing time comparison of 40 Invisalign scans and 40 restorative scans with 3 prep teeth processed by the iTero Element 2/iTero Element 5D computing units and the iTero Element Plus series computing unit.

Accuracy defined as a combination of trueness and precision tested on different substrates, under different lighting conditions, for crown preparation and full-arch scanning. Based on the results of 10 peer-reviewed papers 2018-2020. Data on file at Align Technology, as of April 6, 2020.

The use of the iTero Element 5D Plus imaging system requires the use of a full barrier sleeve and clip on vent cover for the United States.

align

© 2021 Align Technology, Inc. All Rights Reserved. Invisalign, iTero, iTero Element, the iTero logo, among others, are trademarks and/or service marks of Align Technology, Inc. or one of its subsidiaries or affiliated companies and may be registered in the U.S. and/or other countries. | MKT-213398

iTero®