

# ÆLITEFLO™ LV

## Radiopaque Low Viscosity Composite



### INDICATIONS FOR USE:

- Dentin liner
- Blocking undercuts
- Pit & Fissure sealant
- Preventative resin restoration

### Radiopacity

It is recommended that the radiopacity of composite be greater than or equal to enamel at 2.25mm of Al<sup>1</sup>, ÆLITEFLO LV at 2.72 mm Al is easy to differentiate from other restorative materials allowing for easy identification on the radiographs.

### Reliability

The ÆLITEFLO restorative line from BISCO has demonstrated over 15 years of proven clinical success, and high clinician acceptance.

### Shade range

ÆLITEFLO LV is available in 2 VITA®\*\* shades (A2 & A3.5).

1. Flowable composites: laboratory test methods. ADA Professional Product Review (Online). Spring 2009;4:2. [ada.org/sections/scienceAndResearch/pdfs/0904\\_composites\\_testmethods.pdf](http://ada.org/sections/scienceAndResearch/pdfs/0904_composites_testmethods.pdf).

\* mm Al stands for millimeters of aluminum, a standard measurement used for comparing the radiopacity of different materials.

\*\* VITA is a registered trademark of VITA ZAHNFABRIK H. Rauter GmbH & Co. KG Germany.

ÆLITEFLO LV is a multi-use flowable resin based composite with high radiopacity.

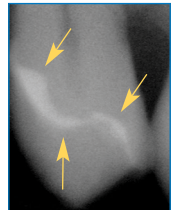
### Viscosity

When applying the first layer of a resin based composite to a tooth preparation it is critical that the material adapts to the preparation walls to create a void free seal.

### BENEFITS:

- Extremely easy handling and low viscosity flow for effortless adaptation to dentition
- Superior radiopacity for easy detection on radiographs
- Micro-hybrid formula provides outstanding strength
- High polish and gloss for improved esthetics
- A2 & A3.5 VITA Shades

Radiograph demonstrating high radiopacity of ÆLITEFLO LV used as a liner



### ORDERING INFORMATION:

1 Syringe (1.5g), 15 Syringe Tips, Instructions/MSDS

A2 ..... H-664A2F  
A3.5 ..... H-664A35F

Rx Only

[www.biscocanada.com](http://www.biscocanada.com) | EN: 1.800.667.8811 | FR: 1.800.211.1200

