



SALE

2021 2nd PROMOTION • Expires June 30, 2021

EN: 1.800.667.8811 • FR: 1.800.211.1200

Restorative & Aesthetic Dentistry



Please visit www.biscocanada.com
to take advantage of more products on sale!
Receive **FREE SHIPPING** on all online orders.



VacuLUX

HVE ISOLATION SYSTEM

NEW
PRODUCT

Introducing the **VacuLUX HVE** Isolation System.
Better patient comfort, field and aerosol management.



Introductory Offer

**BUY STARTER KIT
GET MOUTHPIECE 4/PK FREE**

\$575.00

VacuLUX Isolation Starter Kit

- 1 HVE Adapter
- 1 Whisper Lite Kit
- 4 assorted autoclavable mouthpieces (Pedo, Sm, Med, and Lg)

\$148.00

VacuLUX Mouthpiece 4 pack AVLUXM (Med), AVLUXS (Sm) AVLUXP (Pedo), AVLUXL (Lg) AVLUXA (Asst)

\$325.00

VacuLUX Adapter VLUXD (Dryshield) VLUXZ (Zyris)

Autoclavable mouthpieces are now available and are universally compatible with Ascentcare's **VacuLUX** adapters as well as **Zyris Isolite** or **Dryshield** systems.

Discover the features worth making a switch

In addition to a bite block, cheek retractor, tongue guard and hands-free, continuous high-volume suction, enjoy the added benefits of features such as:



Universal Fit

Designed to fit Zyris or Dryshield systems



Autoclavable

Save money with a more affordable option



Patient Comfort Flap

Soft silicone flap protects for a more comfortable experience



Liquid Rollover Edge

Prevent escaping fluids for increased spatter reduction



Evacuation Chamber

Consistent, predictable suction for a dry field you can count on



Integrated Light Guide

Guided, targeted illumination for VacuLUX or Isolite systems



VacuVUE

HVE DENTAL MIRROR



Introductory Offer

10% OFF

\$943.20 ~~\$1048.00~~

VacuVUE HVE
Mirror 3 Pack Starter Kit
4VVUES3 (Size 4) or 5VVUES3 (Size 5)

Reduce aerosols and spatter by 90% or more with the **VacuVue HVE** Mirror.

PureHD

Superior Mirror Technology:

- 99% color accuracy
- 40% higher reflective value
- front mirroring: 75 layers
- **replaceable mirror faces**



Standard Rhodium Mirror

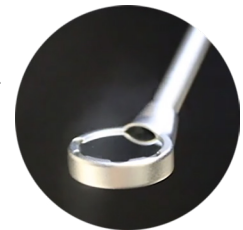
Liquid Control

Reduces **spatter** and pooling fast with dual-sided liquid evacuation ports.



Aerosol Control

Engineered with a large-bore port to help you reduce aerosols using continuous suction.



ALUMINUM CONSTRUCTION

Constructed with aerospace-grade aluminium, this **autoclaveable** mirror is durable and lightweight.

Ergonomic Handle

Triangular shape offers smooth, **agile** maneuverability.

360° rotation

Designed to allow for **unhindered** rotation without losing the suction seal.

Simple Installation

Easily connect to your current valve or use the lightweight, **kink-resistant** Whisper Lite kit.



TheraBase™

Self-Adhesive Calcium Releasing Base/Liner

Every great restoration starts with a great foundation.

TheraBase is a dual-cure, calcium and fluoride releasing, self-adhesive base/liner. Utilizing the THERA technology, TheraBase chemically bonds to tooth structure, and releases and recharges calcium and fluoride ions.¹ TheraBase's calcium release generates an alkaline pH which promotes pulp vitality.² It is a dual-cured material that will polymerize even in deep restorations where light cannot reach.

TheraBase is stronger and more durable than other base materials, glass ionomers and resin-modified glass ionomers.* Additionally, it is radiopaque allowing for easy identification on radiographs, providing a quick and effective diagnosis.



\$169.00

TheraBase (H35001P)

BUY 1, Get 1 FREE



Releases Calcium and Fluoride

Continuous release of Calcium and Fluoride ions¹



Self-adhesive

No bonding agents required - Save time and money



High flexural strength

Stronger and more fracture resistant



High compressive strength

Absorbs shock and stress from occlusal forces without fracturing



Contains MDP

Contains the adhesion promoting monomer MDP, ensuring reliable and optimal bond to dentin³



Easy to use

Auto-mix, dual-syringe provides a consistent mix for immediate delivery with zero to minimal waste of material.



Dual-Cured

Material will fully cure even in deep restorations where light cannot reach.



Alkaline pH

Generates an Alkaline pH (pH=11*) in minutes, which promotes pulp vitality²



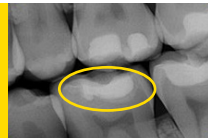
High degree of conversion

Ensures enhanced physical properties



Radiopaque

TheraBase is radiopaque allowing for identification on radiographs and effective diagnosis.

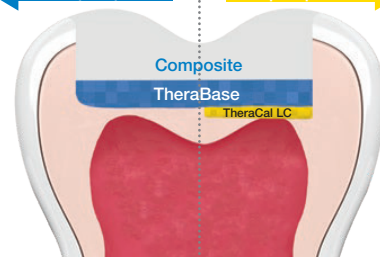


THERA HYDROPHILIC MATRIX



BISCO has developed a hydrophilic matrix that allows for ion exchange. Previous or traditional resin matrices have been hydrophobic, but BISCO's matrix allows for ion exchange as water goes into the matrix, reacts, and calcium hydroxide ions and fluoride ions are released. At the calcium-rich interface between TheraBase and the dentin, an alkaline pH environment is created.

← NO Pulp Exposure Pulp Exposure →



In deep restorations and when pulp exposure occurs, BISCO recommends the use of TheraCal LC for direct and indirect pulp capping and as a liner. Both TheraBase and TheraCal LC can be used together in a sandwich technique case scenario for optimum calcium and fluoride release benefits and ultimate pulp protection.

* Data on file.

1. Gleave CM, Chen L, Suh BI. Calcium & fluoride recharge of resin cements. Dent Mater. 2016 (32S):e26

2. T. Okabe, M. Sakamoto, H. Takeuchi, K. Matsushima. Effects of pH on Mineralization Ability of Human Dental Pulp Cells. Journal of Endodontics. Volume 32, Number 3, March 2006.

3. Hydrolytic stability of self-etch adhesives bonded to dentin, S Inoue 1, K Koshiro, Y Yoshida, J De Munck, K Nagakane, K Suzuki, H Sano, B Van Meerbeek, Journal of Dental Dentistry, December 2005

REVEAL[®]

HD Bulk

New Bulk Fill composite from BISCO



BUY 3, Get 1 FREE*

*Free item must be the same item

Bisco's HD Filler Technology

The new High Depth HD Filler Technology allows REVEAL HD Bulk to perform like no other composite in its class. REVEAL HD Bulk contains a proprietary filler technology that allows an optimized refractive index, which creates both superior light penetration and subsequent polymerization of the composite. You can confidently and predictably cure in 5-6 mm increments, utilizing the desired bulk-filling technique to save time while still ensuring a high-quality restoration.

- ✓ Proprietary resin-filler system for optimized performance
- ✓ Confidently cure in 5-6 mm increments
- ✓ High filler loading - better handling, strength, radiopacity, degree of conversion
- ✓ Reduction of volumetric shrinkage and shrinkage stress
- ✓ Optimal light transmission and degree of conversion
- ✓ Exceptional radiopacity for easy detection (4.0 mm AI)

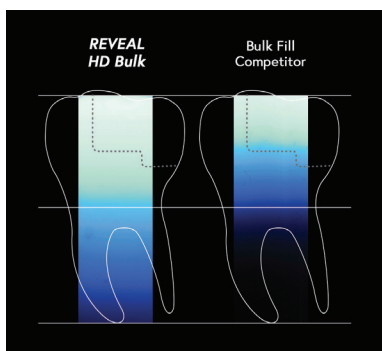
\$465.00 **HD Bulk Unit-Dose Kit (0-H93030K)**
 25 Unit-Dose Tips Reveal HD Bulk Shade: A2 (0.25g ea.)
 25 Unit-Dose Tips Reveal HD Bulk Shade: A3 (0.25g ea.)
 1 Bottle All-Bond Universal[®] (6ml)
 1 Syringe TheraCal LC[®] (1g)

\$385.00 **HD Bulk Fill Syringe Kit (0-H93010K)**
 1 Syringe Reveal HD Bulk Shade: A2 (3g)
 1 Syringe Reveal HD Bulk Shade: A3 (3g)
 1 Bottle All-Bond Universal[®] (6ml)
 1 Syringe TheraCal LC[®] (1g)

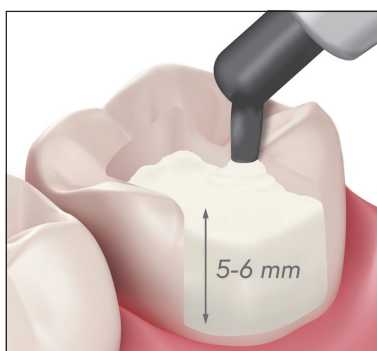
\$139.00 **UNIT-DOSE REFILLS (25 x 0.25g ea.)**
 Shade: A1, A2, A3, B1

\$77.00 **SYRINGE REFILLS (3g)**
 Shade: A1, A2, A3, B1

Light Transmission



Cures at 5-6mm Increments



Exceptional Radiopacity



ALL-BOND UNIVERSAL™

Light-Cured Dental Adhesive

A TRULY UNIVERSAL ADHESIVE
offering optimized performance for all of
your daily restorative needs.



One bottle. Countless Advantages.

1 COMPATIBLE

Compatible with all light-, self- and dual-cured resin composite and cement materials for all direct and indirect procedures

2 VERSATILE

Its chemistry offers the flexibility to either total-, self- or selective-etch

3 DURABLE

Offers high bond strength to all indirect substrates including: metal, glass ceramics, zirconia, alumina, porcelain (silica-based) and lithium disilicate

4 ONE BOTTLE

No additional activator is required

5 OPTIMAL

Low film thickness (less than 10 microns) and virtually no post-operative sensitivity, without sacrificing clinical performance



Now Available in Unit-Dose

BUY 4, Get 1 FREE*

*Free item must be the same item

\$195.00 | Standard Kit (B-7202B0K-EU)

\$184.00 | Refill (6ml) (B-7202P)

\$219.00 | 50 Unit-Dose (0.20ml) (B-73050K)

\$409.00 | 100 Unit-Dose (0.20ml) (B-73100K)

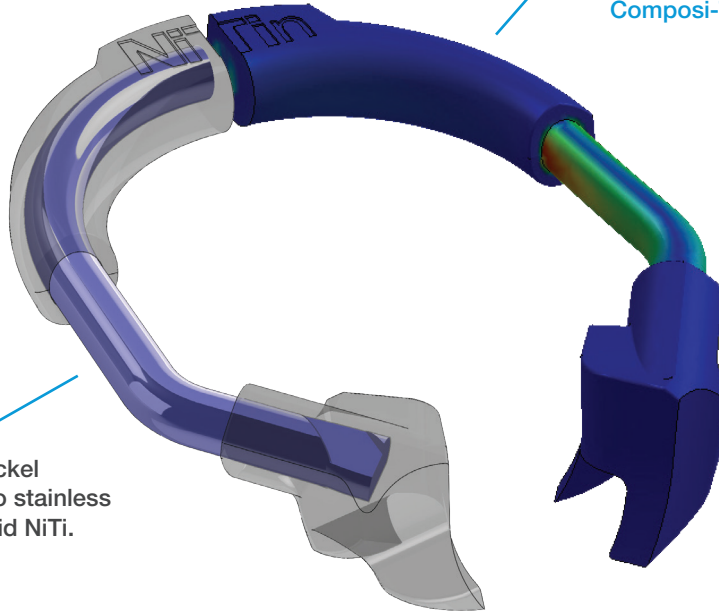


NiTinol Sectional Matrix System

By Garrison Dental. A Bisco Canada Exclusive



The same PEEK® (polyether ether ketone) superpolymer reinforcement technology used to reduce ring stretch as with the award-winning Composi-Tight® systems.

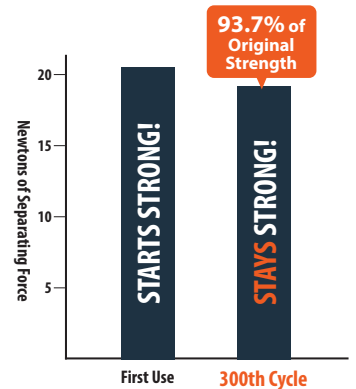


Nitinol drawn-wire nickel titanium is superior to stainless steel or laser-cut, solid NiTi.

Precisely engineered tip geometry allows NiTin™ to grip where others pop-off, all while reducing flash.

Your contacts are guaranteed - because NiTin retains an industry-best 93.7% of its original tooth-separating force after 300 cycles!*

*Here's how the torture test cycle works: The NiTin ring is placed on a typodont for 5 minutes, then removed and exposed to a curing light. It gets a full ultrasonic cleaning bath and finished up with a cycle through a steam autoclave. The separating force is measured at regular intervals.



NiTIn Intro Kit



- 1 Ring Placement Forceps
- 1 NiTin Standard Ring - White
- 1 NiTin Long Ring - Black
- 40 Assorted Matrices
- 40 Assorted Wedges

20% Off

\$358.40 ~~\$448.00~~
10-NT-KMN-40

Rings



NiTIn™ Standard (NT500)

NiTIn™ Long (NT400)

\$236.00
2/Pack

BUY 4, Get 1 FREE*

*Free item must be the same item

Full Contour Bands



NTM100
Premolar, 4.0 mm

NTM150
Premolar, 4.1 mm

NTM175
Molar, 5.0 mm



NTM200
Tall Molar, 5.4 mm



NTM300
Tall Molar, 6.0 mm

\$335.00
Kit

\$75.00
50/Pack

BUY 4, Get 1 FREE*

*Free item must be the same item

LMArte

Sculpt masterpieces



LM-Arte instruments have been developed in co-operation with Style Italiano, a study group of passionate clinicians and researchers specialized in esthetic restorative dentistry.



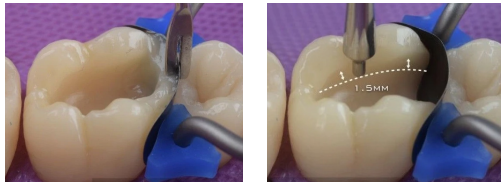
\$58.50 ~~\$65.00~~

10% Off

Posterior Misura

Horizontal & Vertical Measuring

- Designed for vertical measuring of thickness of composite layers on posterior restorations. The fork shaped tip of the instrument allows modeling of the proximal wall to copy the height and anatomy of the neighboring tooth with the presence of a matrix.



SOLO ANTERIOR



NEW PRODUCT

Sharpened edges

- Cut
- Split
- Separate

Flat profile

- Flattening
- Uniform

Straight edges

- Scrapping

Sharp tip

- Precision modeling
- Micromodeling
- Limit marking
- Scratching

Thin blade

- Proximal modeling

Sharpened edges

- Cut
- Split
- Separate
- Marginal ridges

Rounded tip

- Delicate delimitation
- Cervical contouring

Convex profile

- One point modeling
- Create depressions

Convex profile

- Create buccal profile
- Create cervical profile
- Access difficult areas

Angled edge

- Definition
- Scrapping

SOLO POSTERIOR



NEW PRODUCT

Flat end

- Plugger

Flat profile

- Big excess removal
- Medium excess removal

Semi-Rounded edges

- Slope forming
- Excess removal
- Margin removal

Angulation

- Better access for deep cavities

4-5 mm Bulkfill safety area

- Probe for bulk fill materials

Tapered profile

- Fine excess removal
- Slope modelling
- Secondary anatomy

Sharp tip

- Precision modeling
- Micromodeling
- Limit marking
- Scratching
- Flow distribution
- Bubble elimination

4/5mm



LUCIDA

COMPOSITE
GLOSS
SYSTEM



IT'S ALL ABOUT THE FINISH.

A simple and elegant chairside polishing system for composites, that provides a natural, high lustre, "enamel-like" finish.

Lucida™ powered by Style Italiano™ and DiaShine®, Lucida™ is your complete solution for the chairside polishing of composites, provisionals, porcelain veneers & denture-based acrylics. The Lucida system combines DiaShine's proprietary, water soluble, chairside polishing compound and disposable Lucida Felt Stars to give you a system that is both versatile and effective.

Developed by Style Italiano, the Lucida star-shaped felts, have rounded points to allow you to polish facially, interproximally and occlusally. The felts offer a variable thickness, depending on the pressure and speed applied, are disposable, and come with autoclavable mandrels.

~~\$159.20~~ ~~\$199.00~~

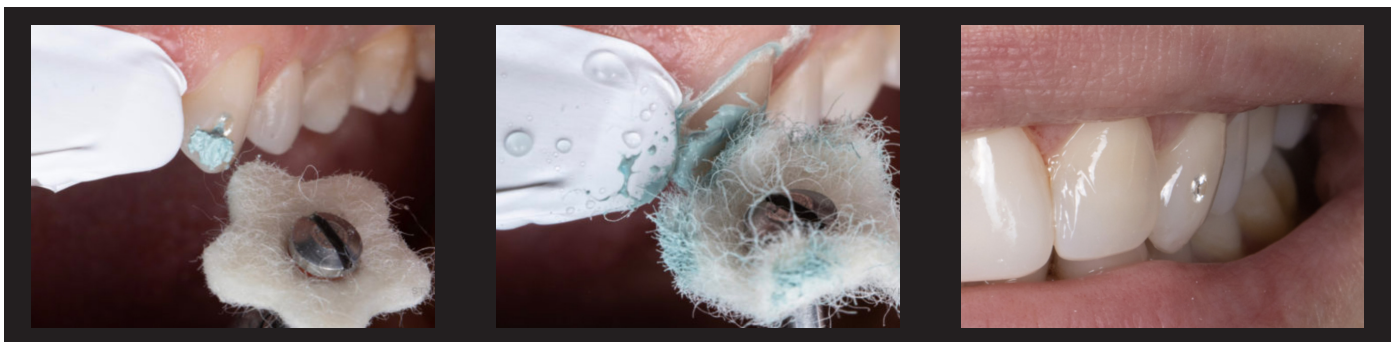
20% Off

INTRO KIT (LUC-KIT)

- 1 Lucida Paste, 5 Lucida Mandrels, 70 Lucida Stars

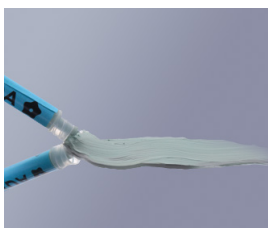
Lucida Star Felts (100 pack)	LUC-FELT100	\$35.00
Lucida Diamond Paste (2g syringe)	LUC-PASTE	\$89.00
Lucida Mandrel (5 pack)	LUC-MAN5	\$35.00

DIASHINE®



Clinical cases by Dr. Marcin Krupinski – Style Italiano

LUCIDA PASTE



Lucida Paste provides a luxurious gloss with its patented submicron hybrid water-soluble polishing compound. Its unique formula allows the paste to stay and spread perfectly on the tooth surface while polishing, yet goes away immediately when water is applied.

LUCIDA STAR



The unique **Lucida Star** felt polishing wheel solves many issues of conventional felt polishing wheels on several fronts. Its unique thickness and shape allows access to hard-to-reach areas, provide intermittent touch and variable thickness, depending on the force and speed applied.

COMPO-BRUSH

The new Compo-Brushes developed with Styleitaliano are intended for composite staining.

Their black synthetic fiber allow for **extreme precision with the best contrast**. A working quality superior to standard brushes you find normally in the composite kits. Brush tips held by friction on their handle.

#000 Posterior brush tip can easily be bent by the user for a better access to the posterior areas.

Compo-Brush set contents: two complete brushes and two replacement brush-tips of each model. Single brushes as well as brush tips refills are available separately.

10% Off



4650-POST
Compo-Brush,
complete brush
#000
~~\$69.00~~ \$62.10



4650-ANT
Compo-Brush,
complete flat brush
~~\$69.00~~ \$62.10

Compo-Brush, set of 2 brushes and 2 spare tips ea. (2 x ANT & 2 x POST)	4650-Set	\$107.10	\$119.00
Compo-Brush, tips #000 for posteriors (50 pcs)	4651-POST	\$85.50	\$95.00
Compo-Brush, flat tips for anteriors (50 pcs)	4651-ANT	\$94.50	\$105.00



MY SHADE GUIDE FOR COMPOSITES

Create Your Own Custom Shade Guides.

My Shade Guide is easy-to-use, 2-part silicone mould, that allows you to easily produce custom composite shade guides for your aesthetic cases.

10% Off

My Shade Guide Kit	\$117.00	\$130.00
Refill	\$71.10	\$79.00



Sanctuary™



\$23.00

6"x6" Sanctuary
Latex Dental Dams (36 Sheets)

BUY 5, Get 1 FREE



\$32.00

6"x6" Sanctuary
Non-Latex Dental Dams (15 Sheets)

BUY 5, Get 1 FREE



\$34.00

6"x6" Sanctuary YIN YANG
Non-Latex Dental Dams (15 Sheets)

BUY 5, Get 1 FREE



143.10 ~~\$159.00~~

Dental Dam Punch (157mm)

10% Off

Powder Free Non-Latex Dental Dam

Sanctuary's non-latex dental dam is made from Polyisoprene, a material which very closely resembles rubber. It has, similar polymer structure and physical properties as natural rubber, minus the potential allergen of the latex protein.



Consultants' Comments

"More tear resistant than the non-latex dams I was using."

"I was impressed with the ease of use and texture of this non-latex rubber dam. I was expecting something similar to other nitrile products I have used, but it handled very similarly to latex rubber dam."

"This is the best rubber dam I have ever used."

Unsurpassed Resilience And Tear Tolerance.

Sanctuary Dental Dams are specially designed to be resilient, with an extremely high tear tolerance, even after punching. Sanctuary Dental Dams are manufactured using a special casting technique which ensures a uniform thickness of the material and as a result, a consistently high tear tolerance over the entire area of the dam.

Stretchability

Sanctuary guarantees an expansion 10x from the original hole punched!

Effective Bonding To Veneers

The clinical success of ceramic veneers depends highly on achieving effective bonding to both the dental surface and the veneer itself. Assuming preparations are exclusively (or largely) on enamel, the effective and reliable bonding to the tooth side of the equation is achieved by the proper etching with phosphoric acid followed by the application of the adhesive system. Effective bonding to the ceramic, however, requires a series of steps that need to be fully understood and applied in a correct sequence and manner to guarantee its success. This short article describes the steps highlighting the details that will ensure adequate bonding and clinical success of your veneers.

Sandblasting:

Blasting Aluminum Oxide (AlOx) particles on the intaglio surface has primarily the purpose of eliminating debris left when the veneer is fired on investment. New technologies for producing the veneer such as pressed ceramic or CAD-CAM usually do not require the blasting procedure as debris are not present. A secondary purpose of blasting is to increase porosity on the surface to improve micromechanical retention. However, with most of glassy-ceramic (porcelain) for veneers, the microstructure left after fabrication already present roughness that helps with retention, and additional blasting may increase the risk of producing cracks, particularly with thin veneers. In general, your laboratory should have a protocol for that, depending on the type of ceramic that is being fabricated. It is important to communicate with your laboratory to learn what are their protocols and procedures.

Hydrofluoric (HF) acid etching:

This is an important component of the bonding procedure. HF etching will only be necessary and effective if the veneers are produced from glassy, silica containing ceramics. This includes all types of feldspathic-based (porcelain) and lithium disilicate ceramics. The primary purpose of HF etching is to selectively dissolve silica particles from the structure resulting in increased porosity for micromechanical retention. In addition, HF etching significantly increases the surface energy of the ceramic and that facilitates the spreading and intimate contact with the silane



Ricardo M. Carvalho,

DDS, PhD, FADM

Professor and Head, Department of
Oral Biological and Medical Sciences
The University of British Columbia,
Faculty of Dentistry

solution, thus improving silanization. The amount of silica and the structural distribution of the particles in the ceramic usually dictates the extension of the HF etching time. For most of the glassy ceramics (porcelain veneers), etching with 9-10% HF for 60-90 seconds is sufficient to produce the necessary effects. For lithium disilicate (Ivoclar-Vivadent), the recommendation is to use 5% HF etching for 20 seconds. After etching, the surface should be rinsed thoroughly with water and air-dried. While the etching time with HF is usually adequate for most ceramic materials, it is not uncommon that some areas of the surface are left “over-etched”.

This appears as “whitish” areas after rinsing and drying. These areas are actually a residue of salts that are formed on the surface due to an extended reaction time between the HF and the dissolved ceramic material, and should be removed because the salts are loosely bonded to the surface and can compromise silanization and ultimately the bonding. Effective removal of the residues can be accomplished by 3-5 minutes ultrasonication in ethanol or by 10 seconds etching with phosphoric acid (PA). Either procedure will remove the salt residues and render the surface ready for silanization. If you use ultrasonication, remember to place the veneers with the intaglio surface facing down otherwise the particles will reprecipitate on the surface. Before silanization, the surface should be free of any moisture and contaminants.

Silanization:

After etching with HF, the surface energy is high and anything that touches the surface will spread easily and penetrate deeply into the porosities. The surface is vulnerable to any source of



Photo Credit: Dr. Miles R. Cone ©2021

contamination until silanization is accomplished. That is an important reason why the ideal protocol to adopt is that HF-etching and silanization should be done one immediately after the other and chairside by the clinician. If try-in is necessary, leave it for after silanization. If the veneer is etched by the laboratory, ensure you know what protocol was used by the lab and silanize the veneers immediately after receiving them. Silanization has the primary purpose of creating a chemical bond between the ceramic and the bonding adhesive resin.

The bond formed is a strong covalent bond and once silanized the surface turns hydrophobic and less prone to contaminants (try-in pastes, saliva) that can be easily removed by rinsing. Silane “primers” contain a high percentage of solvents (>90%, usually ethanol) and the silanization reaction produces water molecules on the surface. This implies that for the complete silanization reaction to occur, solvent and water residues must evaporate and that reflects the typical 1-minute waiting time recommended after silanization. The truth is that optimal silanization may take up to 5 minutes to accomplish and is highly dependent on the ability to eliminate the solvent and water from the surface. The blow of warm air for 30 seconds (from a hair dryer for example) on the surface after silane application has been shown to improve silanization by expediting the solvent/water evaporation and allowing completion of the reaction in a shorter time (30 s vs 5 min).

The most common error with silanization is excess silane. The bonding of a single layer of silane to the ceramic is effective and strong, but if several layers of silane is placed on the surface, the bond between different layers of silane is rather weak and may hydrolyze over time and cause debonding of the veneer. It is recommended that silane should be applied in small quantities, enough to cover the surface and not to leave a shiny surface behind. Silane primers are offered in both single bottle, pre-activated silane or two-bottle systems that require mix for activation prior use. Single-bottle, pre-activated primers are convenient, but have a limited shelf-life since a condensation

reaction may occur over time in storage (particularly if stored above 18-22 oC). Silane solution should appear clear and transparent as water. If you notice a “milky” opaque liquid when dispensing, it is a sign that the solution is condensing in the bottle and should not be effective for silanization.

Bonding:

Etching with HF created or increased porosities for micromechanical retention. This will only be effective if the porosities are filled with a low viscosity adhesive, thus allowing for the effective chemical bonding with the silanized surface and producing the micromechanical retention. Resin cements used for the final cementation of the veneer are not low-viscosity and will not effectively penetrate into the porosities to favor micromechanical retention. It is therefore recommended that a thin layer of an adhesive agent (preferably a hydrophobic, non-solvented) be applied to the silanized surface prior cementation. The adhesive does not need to be light-cured separately and will be cured together with the cement through the veneer.

Cementing:

There is no need for a dual-cure resin cement for veneers. Extended light exposure through the veneer and additional light activation from different angles ensure curing under the ceramic. In addition, there is a valid concern that traditional dual-cure resin cements may undergo color change over time (due to presence of aromatic amines required for the self-curing). Light-cure only resin cements specifically made for veneers are available from several manufacturers. Alternatively, veneers can be cemented with flowable composites, warmed composites and also with currently available amine-free dual cure resin cements. Regardless of the preference, always ensure proper light curing of the entire veneer surface and margins.



\$94.50 ~~**\$105.00**~~

10% OFF

BIS-SILANE

Two-Part Silane Coupling Agent

BISCO's porcelain primers are silane coupling agents used to improve bonding between porcelain restorations and resin cements. It also protects porcelain restorations from contamination, increases mechanical and chemical bonding of resin to the porcelain, and yields greater resistance to water leakage at the bonding interface.

- ✓ Protects the veneer from contamination and greatly enhances the overall bond of the veneer to the tooth.
- ✓ A two-component silane ensures that the material is always fresh, resulting in optimal performance.

9.5% PORCELAIN ETCHANT

9.5% Buffered Hydrofluoric Acid Gel

- ✓ Accurately and efficiently etch a porcelain veneer to ensure optimal bonding.
- ✓ Gel material allows accurate placement, full coverage of the veneer, and greater control to ensure the safe usage of the product.

\$38.70 ~~**\$43.00**~~

10% OFF



\$48.60 ~~**\$54.00**~~

10% OFF

PORCELAIN BONDING RESIN

HEMA-Free Unfilled Resin

- ✓ A HEMA-free resin designed specifically for bonding porcelain.
- ✓ A hydrophobic resin, water will not penetrate the bond, thereby eliminating additional shade shifting concerns.

Choice™ 2 Light-Cured



An easy-to-use veneer cement that provides excellent aesthetic results.

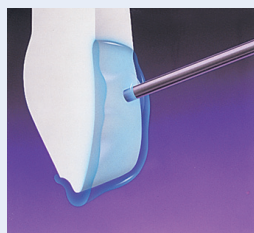
- ✓ Light-cure-only system that provides excellent color stability.
- ✓ Try-in pastes offer excellent color match to final cured cement (sold separately).
- ✓ Customer-preferred delivery and shading system.
- ✓ Easy to clean up.
- ✓ Easy to dispense, apply and seat.

\$76.50 ~~**\$85.00**~~ **Refill Syringe (4.5g)**
 • (A1, A2, A3, B1, Translucent, Universal Opaque, Milky Opaque, Milky Bright.)
10% OFF

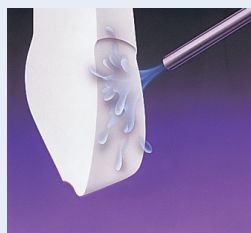
\$40.50 ~~**\$45.00**~~ **Try-In Paste Refill Syringe (2g)**
10% OFF

Porcelain Veneer Restoration Preparation & Cementation Technique*

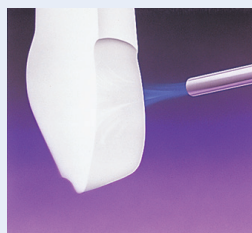
* Refer to complete instructions for use for technique and instructions.



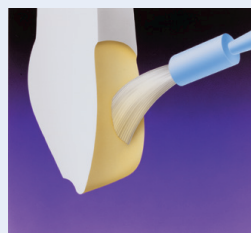
Clean preparation, rinse, dry and then etch



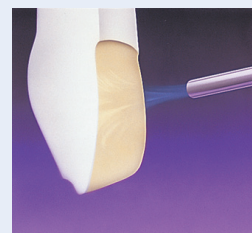
Rinse



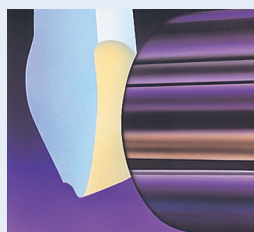
Air dry. Leave visibly moist



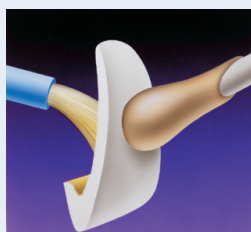
Mix and apply ALL-BOND UNIVERSAL



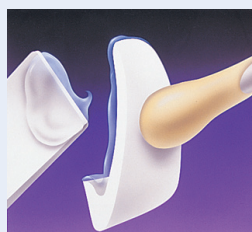
Air dry



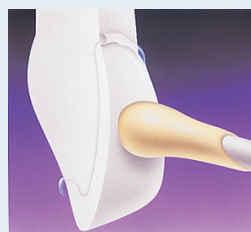
Light cure



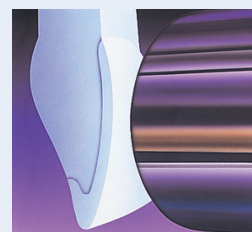
Apply PORCELAIN BONDING RESIN



Line veneer with CHOICE 2



Working in pairs, gently seat one veneer at a time



Light cure

VENEER ME

Maximum security for your veneers



10% Off

Maximum Protection For Your Delicate Veneers.

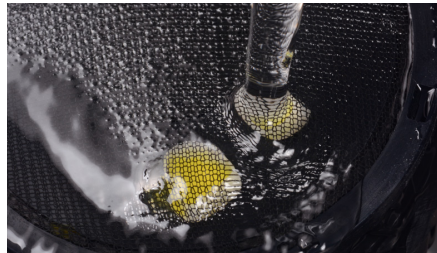
The base of VeneerME box is covered with a sticky pad made out of polyurethane gel. Veneers are simply placed on this pad, on their buccal surface, and adhere to the surface naturally. The entire preparation process of the internal side of the veneer (acid etching, silanization, application of bonding agent) can be done without any fear of a veneer escaping or falling on the floor. The pad's material is ultra-durable and can be re-used several times before replacement becomes necessary. The gel pads can be purchased separately and are easy to replace.

Description	Item no.	Price
KIT (3 SETS), set of 3 complete boxes, 3 spare PU pads and 3 spare membrane-frames	2600	\$292.50 \$325.00
MINI KIT (1 SET), set of 1 complete box, 1 spare PU pad and 1 spare membrane-frame	2600-1	\$107.10 \$119.00
VeneerME, spare PU pads (10 pcs)	2610	\$72.00 \$80.00
VeneerME, spare membrane-frames (10 pcs)	2620	\$117.00 \$130.00



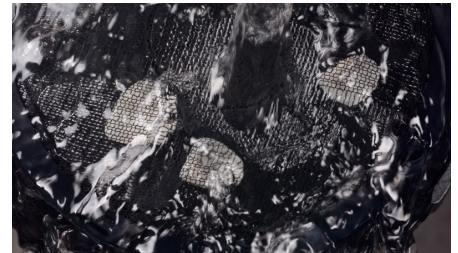
Setp 1 - Acid Etching

Performed on the sticky pad



Setp 2 - Clip & Wash

Clip the membrane frame and wash the acid, even under the tap



Setp 3 - Rinse & Dry

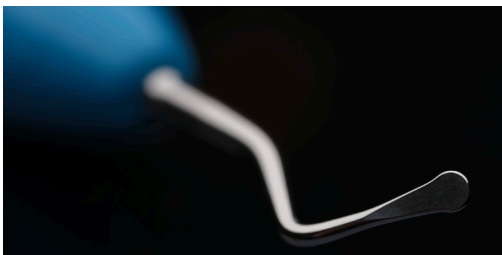
Rinse, even with an ultrasonic device, and continue with all your bonding steps in the same way

CORD PACKER - 2.0 MM

LM's Cord Packer 2.0 provides the best in precision, ergonomics, and tactile sensitivity.

~~\$42.00~~ \$37.80

10% Off



- The bent blade enables makes getting around the tooth smooth and easy, with no catching or pull-back of the retraction cord
- High-quality stainless steel tip
- Durable, medical-grade silicone handle

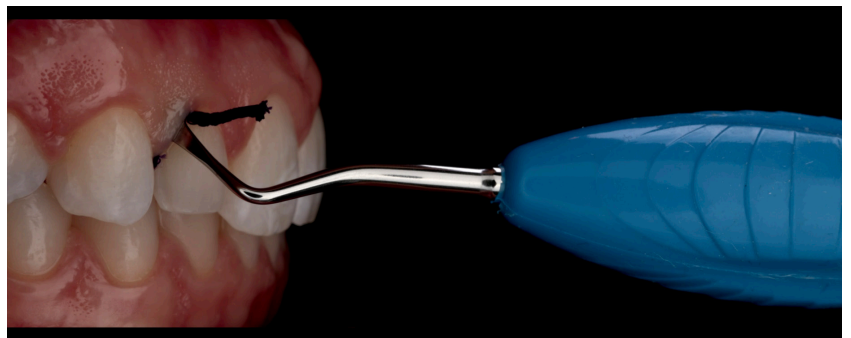


Photo Courtesy of Dr. Miles R. Cone

Smile Line ☺
made in switzerland

Professional Dental Photography
Now Available To EVERYONE!



SMILE LITE MDP

MOBILE DENTAL PHOTOGRAPHY
BY PROFESSOR LOUIS HARDAN

The first "Mini Studio" for beautiful intra-oral dental photography harnessing the power of your smartphone.
Now, you can easily take high quality digital photos for:

- Shade matching
- Artistic pictures
- Every day communication with the lab
- Short video clips
- Patients' documentation

\$789.00

6600 KIT

- SMILE LITE MDP
- MDP lateral diffusers (2 pieces)
- MDP polarizing filter

+ A FREE Flexipalette (A, B, or C)

Value
\$69

*SmartPhone is not included



FLEXIPALETTE

A must-have for intra-oral photography



Description	Item no.	Price
Flexipalette, set of 4 forms	FP-3100	\$239.00
Flexipalette, form A	FP-3001	\$69.00
Flexipalette, form B	FP-3002	\$69.00
Flexipalette, form C	FP-3003	\$69.00
Flexipalette, Colour Match	FP-3004	\$69.00



Composi-Tight® 3D Fusion™ Firm Matrix Bands



New Composi-Tight® 3D Fusion™ Firm matrix bands with eZ-Place™ technology maintain their shape during placement, making them significantly easier to insert!

Fusion Firm:

- Nearly 70% better at resisting deformation!
- Super-thin at only 0.0015"
- Five ideal sizes!

Perfect for:

- Tight interproximal spaces!
- More conservative preps!
- First-time users and veterans alike!

Composi-Tight® 3D Fusion™ Kit

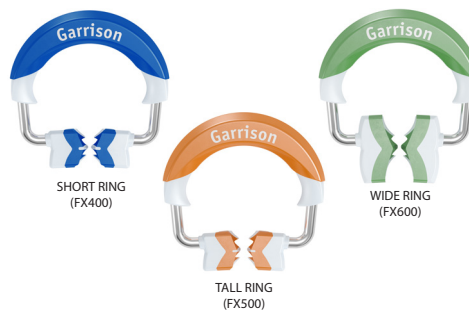


- 1 – Short Ring (blue)
- 1 – Tall Ring (orange)
- 1 – Wide Prep Ring (green)
- 70 – Assorted Firm Matrix Bands
- 80 – Assorted 3D FUSION Wedges
- 12 – Assorted Rally Polishers
- 12 – Assorted FenderWedges®
- 1 – Ring Placement Forceps

10% Off

\$675.90 ~~\$751.00~~
FXR-HHF-10

Rings

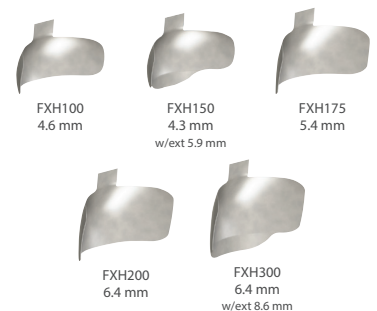


\$458.00
Kit

\$313.00
2/Pack

BUY 4, Get 1 FREE

Firm Matrix Bands



\$93.00
50/pk

\$163.00
100/pk

BUY 4, Get 1 FREE*

*Free item must be the same item

Fit Strip

Flexible Interproximal Twistable

FitStrips are a complete line of interproximal trimmers and finishers from the company that invented tight interproximal contacts.



Your Complete IPR Solution!

NEW! .40mm and .50mm strips easily accommodate maximum reduction cases

NEW! IPR gauges for exact reduction

IMPROVED! Attachable handle for greater ease of use and patient comfort

\$266.00

Universal Kit (FPSK04)

- 2 handles
- 1 IPR gauge
- 1 single-sided of each grit (4 pcs)
- 1 double-sided of each grit (6 pcs)

\$266.00

IPR Kit (FPSK05)

- 2 handles
- 1 IPR gauge
- 2 double-sided of each grit (10 pcs)

\$237.00

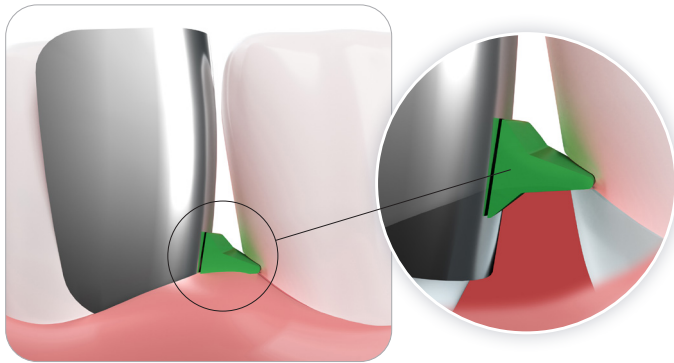
Subgingival Finishing Kit (FPSK07)

- 2 handles
- 1 serrated saw
- 3 subg super fine, 3 subg fine, 3 subg medium

Fusion™ Anterior Matrix System



The Fusion Anterior Matrix System helps you easily express your artistic nature restoring beautiful smiles for your patients.

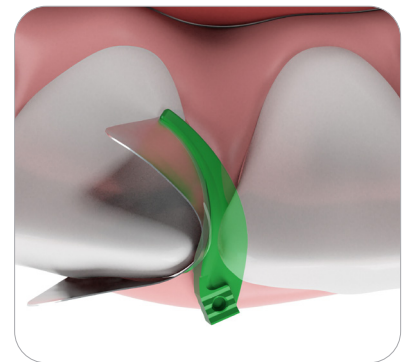
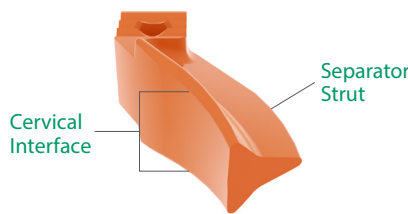


Fusion Anterior Matrix bands help you recreate ideal interproximal anatomy quickly and confidently:

- Only 0.0015" – significantly thinner than strips to facilitate better interproximal contact.
- Firm stainless steel resists deformation both during placement and while compressing composite into the preparation.
- Easy to slide into the sulcus for deeper restorations.
- Ideal anatomic curvature in the gingival-incisal direction AND facial-lingual.
- Far superior to strips when restoring large or deep carious lesions.

The clever features of the Fusion Anterior Wedge make it a 'must have' for all anterior restorations:

- Radical curvature ensures a firm seal at the cervical margin from facial to lingual.
- Helps maintain ideal anatomy by hugging the band to the tooth.
- Unique 'T' shape sits deeper in the interproximal space to minimize the dreaded 'black triangle.'
- Tapered separator strut allows you to adjust the amount of pressure exerted to control the interproximal contact.
- The cervical interface is half above and half below the sulcus for maximum adaptation with deeper restorations.



Fusion Anterior Kit

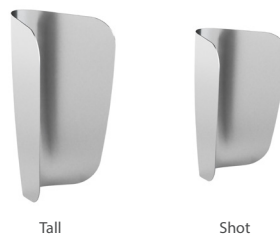


- 50 short bands
- 50 tall bands
- 25 extra small wedges
- 25 small wedges
- 25 medium wedges
- 25 large wedges

Introductory Price - 10% Off

\$194.40 ~~\$216.00~~
ANK01

Fusion Anterior Bands



Tall

Shot

\$93.00
50/pk

\$163.00
100/pk

BUY 4, Get 1 FREE*

*Free item must be the same item

Fusion Anterior Wedges



\$123.00
Kit (200)

\$34.00
50/pk

\$62.00
100/pk

BUY 4, Get 1 FREE*

*Free item must be the same item

It's All In The HANDLE

Optimal ergonomics, handle diameter of 13.7 mm

Color-coded for easy identification

Elastic, non-slip grip for exceptional control

Lightweight metal core from tip-to-tip



The modernization of periodontal instruments over the past several years features innovative designs and technological advancements that enable dental practitioners to provide greater comprehensive care to both healthy patients and those with advanced periodontal conditions. Developments in cryogenic processing, metallurgy, resin-based and polymer materials, along with design modifications that include changes to the handle, shank and working end support operator and patient comfort while enabling the provider the ability to produce a root surface biologically capable of a healthy attachment. Since COVID, hand instruments are being used more routinely to limit aerosol generating procedures in the dental setting. As a result, clinicians are reporting greater incidences of repetitive strain injuries (RSI) and musculoskeletal disorders (MSD). RSI are a variety of musculoskeletal disorders, generally related to tendons, muscles, or joints, as well as some common peripheral-nerve-entrapment and vascular syndromes.¹ MSD are injuries or disorders to the musculoskeletal system and connective tissue, which involves the muscles, nerves, tendons, joints, cartilage, and spinal discs.² MSD are significant issues for dentists and dental hygienists.^{3,4} To help reduce the incidence of MSD and RSI when performing periodontal instrumentation, dentists and dental hygienists need to consider the ergonomic design features of periodontal instruments.

LM was the first dental manufacturer to develop an ergonomic dental handle. Since the 1980's, ergonomics has been the driving force behind product development for the company. Starting with LM-ErgoMax to the improved LM-ErgoSense, developed in 2014, LM has produced instruments that feature a thicker handle, light weight, optimized shape, silicone surface, and color coding, making LM instruments the ideal ergonomic instrument. Worth noting, many LM design features have become the industry standard in the 21st century. Don't just take our word for it. According to the research, instrument handles that are at least 10mm wide in diameter with an overall instrument weight of less than 15 grams, have a positive effect on muscle load in the hand and wrist and reduce pinch force.^{5,6,7,8}



Dr. Joy Void-Holmes

RDH, BSDH, DHSc, AADH

Recent studies also report improved hand comfort and reduced hand fatigue with the use of silicone handles. Quickly becoming an industry favorite, the LM-ErgoSense offers clinicians an enhanced grip and feels great in the hand.

LM periodontal instruments offer superb quality in both coated and uncoated categories appealing to practitioners who prefer stainless steel or sharpen-free options. LMDuraGradeMax instruments are made with a high wear resistant supersteel immune to corrosion and can be resharpened. LMSharpDiamond instruments have a micro membrane coating using modern Physical Vapor Deposition and are completely sharpen free.

1. Yassi A. Repetitive strain injuries. *Lancet*. 1997 Mar 29;349(9056):943-7. doi: 10.1016/S0140-6736(96)07221-2. PMID: 9093264
2. Centers for Disease Control. Work-related musculoskeletal disorders & ergonomics. 2020 Feb. <https://www.cdc.gov/workplacehealthpromotion/health-strategies/musculoskeletal-disorders/index.html>
3. Hayes MJ, Smith DR, Cockrell D. An international review of musculoskeletal disorders in the dental hygiene profession. *Int Dent J*. 2010 Oct;60(5):343-52. PMID: 21141207.
4. Brown, J, Burke, F, Macdonald, E. et al. Dental practitioners and ill health retirement: causes, outcomes and re-employment. *Br Dent J* 209, E7 (2010). <https://doi.org/10.1038/sj.bdj.2010.813>
5. Simmer-Beck M, Branson B. Instrumentation without pain: Strategies to improve the ergonomics of scaling and root planning. *Dimensions of Dental Hygiene*. 2009 Nov. <https://dimensionsofdentalhygiene.com/article/instrumentation-without-pain/>
6. Dong H, Barr A, Loomer P, Laroche C, Young E, Rempel D. The effects of periodontal instrument handle design on hand muscle load and pinch force. *J Am Dent Assoc*. 2006 Aug;137(8):1123-30; quiz 1170. doi: 10.14219/jada.archive.2006.0352. PMID: 16873329.
7. Simmer-Beck M, Branson BG. An evidence-based review of ergonomic features of dental hygiene instruments. *Work*. 2010;35(4):477-85. doi: 10.3233/WOR-2010-0984. PMID: 20448326.
8. Suedbeck JR, Tolle SL, McCombs G, Walker ML, Russell DM. Effects of Instrument Handle Design on Dental Hygienists' Forearm Muscle Activity During Scaling. *J Dent Hyg*. 2017 Jun;91(3):47-54. PMID: 29118071.



LM DuraGrade Max

10% Off

Stainless Steel Instruments



FURCATOR KS

~~\$54.00~~ \$48.60

LM-ErgoSense LM259-260ES

- Delicate, angled excavator
- Suitable also for the cleaning of narrow approximal concavities and grooves in incisors and premolars
- For cleaning of the furcation roof and inner surfaces, particularly concavities and grooves in them



DUAL-GRACEY (SYNTETTE)

~~\$74.00~~ \$66.60

LM-ErgoSense LM215-216ES

- Two elliptical cutting edges
- Rounded toe



MINI DUAL-GRACEY (MINI SYNTETTE)

~~\$74.00~~ \$66.60

LM-ErgoSense LM215-216MES

- Two elliptical cutting edges
- Rounded toe
- Mini model is excellent in tight, deep pockets
- Particularly well adapted for use on premolars' and incisors' palatal and lingual surfaces



GRACEY 13/14

~~\$64.00~~ \$57.60

LM-ErgoSense LM213-214ES

- Working surface inclined 20° to the lower shank
- One curved cutting edge (red line)
- Rounded cutting tip



COLUMBIA 4L-4R

~~\$64.00~~ \$57.60

LM-ErgoSense LM219-220ES

- Working end perpendicular to the lower shank
- Two cutting edges (red line)
- Rounded tip



BARNHART 5/6

~~\$64.00~~ \$57.60

LM-ErgoSense LM227-228ES

- Working end perpendicular to the lower shank
- Two cutting edges (red line)
- Rounded tip



SICKLE H6/H7

~~\$64.00~~ \$57.60

LM-ErgoSense LM146-147ES

- Triangular cross section
- Face perpendicular to the lower shank
- Two cutting edges (red line)
- Pointed tip



SICKLE M23

~~\$64.00~~ \$57.60

LM-ErgoSense LM313-314ES

- Triangular cross section
- Face perpendicular to the lower shank
- Two cutting edges (red line)
- Pointed tip



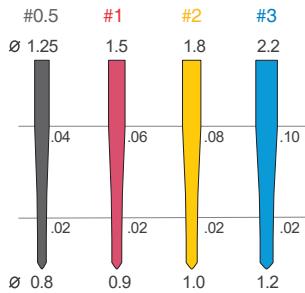
ONLINE ONLY PROMOTIONS

Please visit www.biscocanada.com to take advantage of more products on sale!

Receive **FREE SHIPPING** on all online orders.

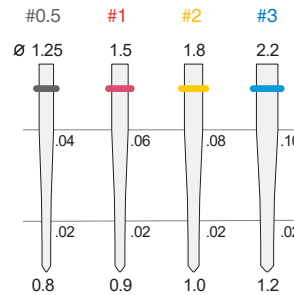


Double Taper LIGHT-POST™ X-RO™ ILLUSION™



BUY 3 GET 1 FREE

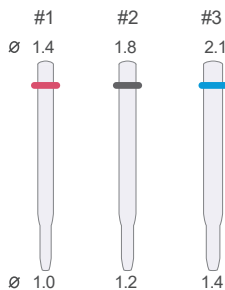
Double Taper LIGHT-POST™



BUY 3 GET 1 FREE

ONLINE ONLY PROMOTIONS

LIGHT-POST®



BUY 3 GET 1 FREE

Rally Composite Mini Polishers



BUY A KIT, GET 3 FREE eZr POLISHERS

ONLINE ONLY PROMOTIONS

LM SharpDiamond™ 100% Sharpen-Free



10% OFF

SmearOFF



480mL

BUY 3 GET 1 FREE



ONLINE ONLY PROMOTIONS

Please visit www.biscocanada.com to take advantage of more products on sale!

Receive **FREE SHIPPING** on all online orders.



Aelite All-Purpose Body



BUY 4, GET 25% OFF

Aelite Aesthetic Enamel



BUY 4, GET 25% OFF

ONLINE ONLY PROMOTIONS

Aelite Ls Posterior



BUY 4, GET 25% OFF

Select HV ETCH



BUY 4 GET 1 FREE

ONLINE ONLY PROMOTIONS

32% UNI-ETCH w/BAC



BUY 4 GET 1 FREE

ETCH-37 w/BAC



BUY 4 GET 1 FREE



AWARD-WINNING PRODUCTS with unique benefits



TheraCal LC (2021 Product Award), Pulpal Protectant
TheraCal PT (2021 Product Award), Pediatric Product
TheraBase NEW! Self-Adhesive Base/Liner

TheraCem (2021 Product Award), Cement: Self-Adhesive
All-Bond Universal (Editor's Choice)

ASM21
Annual Spring Meeting

MAY 6-8
2021
Learning Reimagined

Visit our Virtual Booth during **ODA's Virtual Experience** for product presentations & exclusive offers.

