

# Everyday easy.

3M™ RelyX™ Luting Plus Resin Modified Glass Ionomer Cement

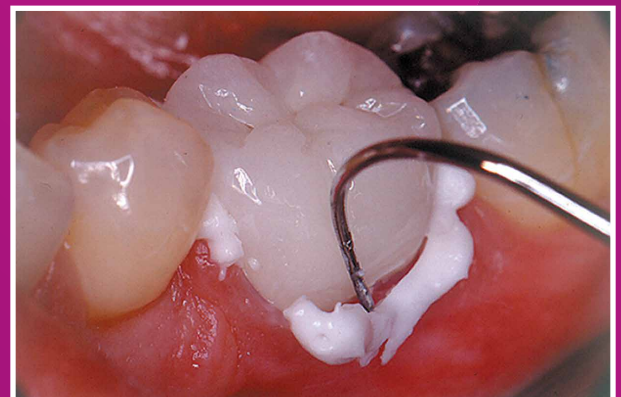


**Recommended for:**  
Metal and porcelain fused to metal  
(PFM) restorations, pediatric crowns,  
orthodontic bands, implants

## Automix delivery eliminates hand-mixing

Convenient, versatile and easy to use RelyX™ Luting Plus Resin Modified Glass Ionomer Cement eliminates hand-mixing while offering better bond strength than conventional glass ionomer luting cements. This formula is suitable for a wide range of everyday applications, including PFMs, metal and pediatric crowns and zirconia restorations.

- 5-second tack light-cure feature for “cleanup on demand”
- Easy to use automix delivery
- Sustained fluoride release for caries-prone patients
- A good choice for pediatric restorations
- Higher bond strength than conventional glass ionomer
- Virtually no post-op sensitivity



RelyX™ Luting Plus Cement is a resin modified glass ionomer cement with a tack light-cure option, for fast cleanup.

## Get more convenience – without sacrificing strength.

RelyX™ Luting Plus Resin Modified Glass Ionomer Cement is formulated to help make everyday procedures like PFMs and metal/pediatric crowns fast and reliable.

Featuring an improved paste/paste formula with tack light-cure option, RelyX™ Luting Plus Cement offers better bond strength compared to other leading RMGI cements, while making clean-up fast and easy. Also available in the Clicker™ Dispenser.



**RelyX™ Luting Plus Automix – Trial Kit (3535TK)**



**RelyX™ Luting Plus Clicker™ Dispenser – Trial Kit (3525TK)**

### Recommended Applications ( ++ Highly recommended / + Recommended)

Indication	Metal/ Metal Based	Glass Ceramics (including Li. Disilicate) (e.g. e.max®, VITA Mark II, IPS Empress 2)	Oxide Ceramics (e.g. 3M™ Lava™ Plus High Translucency Zirconia, Brux Zir®, Procera®)	Resin Nano Ceramics (e.g. 3M™ Lava™ Ultimate CAD/CAM Restorative)	Resin Composites
Inlays/ Onlays	+		+		
Crowns/ Bridges	++		+		
Endodontic Posts	++		+		
Maryland Bridges					
On Implant Abutments	++		++		

### Ordering Information

Item No.	Product	Contents
3535TK	RelyX™ Luting Plus Automix Resin Modified Glass Ionomer Cement Trial Kit	(1) 8.5 g automix syringe (12) mixing tips Technique Guide Instructions for Use
3535	RelyX™ Luting Plus Automix Resin Modified Glass Ionomer Cement Value Pack	(3) 8.5 g automix syringe (36) mixing tips Technique Guide Instructions for Use
3540	RelyX™ Luting Plus Automix Resin Modified Glass Ionomer Cement Automix Tips	(12) mixing tips
3525TK	RelyX™ Luting Plus Cement Trial Kit Clicker™ Dispenser	(1) 11 g Clicker™ Dispenser Technique Guide Instructions for Use
3525	RelyX™ Luting Plus Cement Refills Clicker™ Dispenser	(2) 11 g Clicker™ Dispensers Instructions for Use



### Cementing & Bonding Keep it simple!

Learn more about Cementing & Bonding and the rest of our Simplified Crown and Bridge Solution:

[3M.ca/GetSimplified](http://3M.ca/GetSimplified)



**3M Canada**  
300 Tartan Drive  
London, ON  
N5V 4M9  
Canada  
1-888-363-3685

**3M ESPE Dental Products**  
2510 Conway Avenue  
St. Paul, MN 55144-1000  
USA  
1-800-634-2249  
[www.3M.com/dental](http://www.3M.com/dental)

3M, 3M Science. Applied to Life., Clicker, ESPE, Lava and RelyX are trademarks of 3M or 3M Deutschland GmbH. Used under license in Canada. All other trade names referenced are the service marks, trademarks or registered trademarks of their respective companies. © 2017, 3M. All rights reserved. 1612-07237 E