



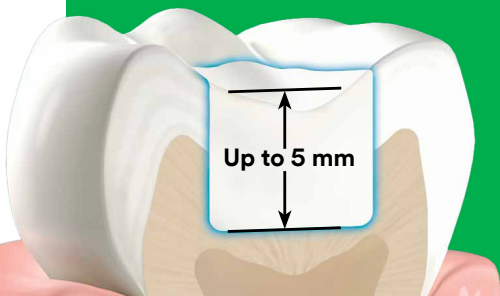
Filtek™

One Bulk Fill Restorative



3M™ Filtek™ One Bulk Fill Restorative

- Fast and easy one-step placement
- Increased opacity for improved esthetics¹
- Stress relief to enable up to 5 mm depth of cure
- Excellent adaptation
- No need for layering or expensive dispensing devices
- Excellent handling and sculptability
- 3M's true nanotechnology provides excellent wear resistance and polish retention
- High radiopacity
- Elongated tip design for easier access to deep cavities
- Available in 5 shades



You choose it for speed. Now it's more esthetic, too.

Posterior restorations are challenging – which is why bulk fill composites that simplify and speed up the procedure have become so popular. However, until now, the faster, easier placement of bulk fill has been at the sacrifice of esthetics. So, as a global leader in esthetic and restorative technologies, we went back to our experts for a solution you're sure to love: 3M™ Filtek™ One Bulk Fill Restorative.

Designed for the posterior, its improved optical properties and opacity give you the simplicity of one-step placement – up to 5 mm – *without compromising esthetic results.*

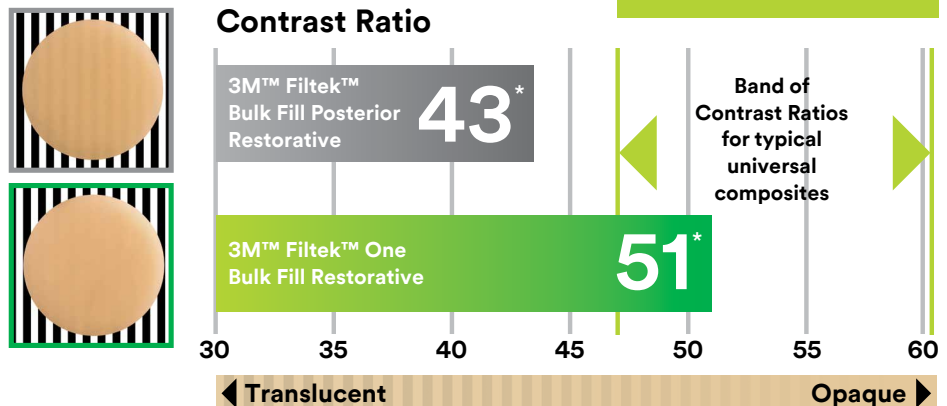
Smart Contrast Ratio Management increases opacity without sacrificing depth of cure

Further development of 3M nanotechnology allows us to manage opacity and depth of cure in a smarter way. With our Smart Contrast Ratio Management technology, we've increased opacity without reducing depth of cure.

In its cured state, Filtek™ One Bulk Fill Restorative has a higher opacity than Filtek™ Bulk Fill Posterior Restorative, resulting in improved esthetics.

Did you know?

Contrast Ratio is the measurement of the translucency or opacity of the material.



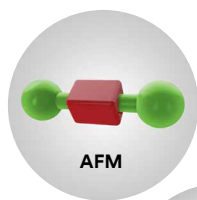
*The contrast ratio is the average of all shades.
¹ Compared to 3M™ Filtek™ Bulk Fill Posterior Restorative.

You'll like that it's simple. They'll be happy that it looks good, too.

More innovative technologies behind 3M™ Filtek™ One Bulk Fill Restorative

Innovative AFM and AUDMA monomers

Reduces shrinkage and relieves stress to allow bulk fill placement up to 5 mm.



Addition-fragmentation monomer (AFM) relieves stress during polymerization.

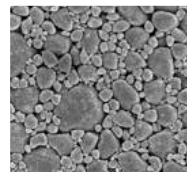


Aromatic urethane dimethacrylate (AUDMA) helps reduce the amount of shrinkage and stress that occurs during polymerization.

3M's TRUE nanofiller technology

Provides excellent wear resistance and polish retention.

5K magnification
of nanocluster



50K magnification
of nanocluster



Ordering Information



3M™ Filtek™ One Bulk Fill Restorative

Refill	Item #	Item #
Shade	Syringe	Capsule
A1	4866A1	4867A1
A2	4866A2	4867A2
A3	4866A3	4867A3
B1	4866B1	4867B1
C2	4866C2	4867C2

SYRINGE SHADE REFILLS include 1 – 4 g syringe; Technique Guide; Instructions for Use.

CAPSULE SHADE REFILLS include 20 – 0.2 g capsules; Technique Guide; Instructions for Use.

www.3MESPE.ca



Available through:

3M Canada
300 Tartan Drive
London, Ontario N5V 4M9
Canada
1-888-363-3685

3M ESPE Dental Products
2510 Conway Avenue
St. Paul, MN 55144-1000
USA
1-800-634-2249
3M.com/dental

3M and Filtek are trademarks of 3M or 3M Deutschland GmbH. Used under license in Canada. © 2017, 3M. All rights reserved. 1705-08769 E